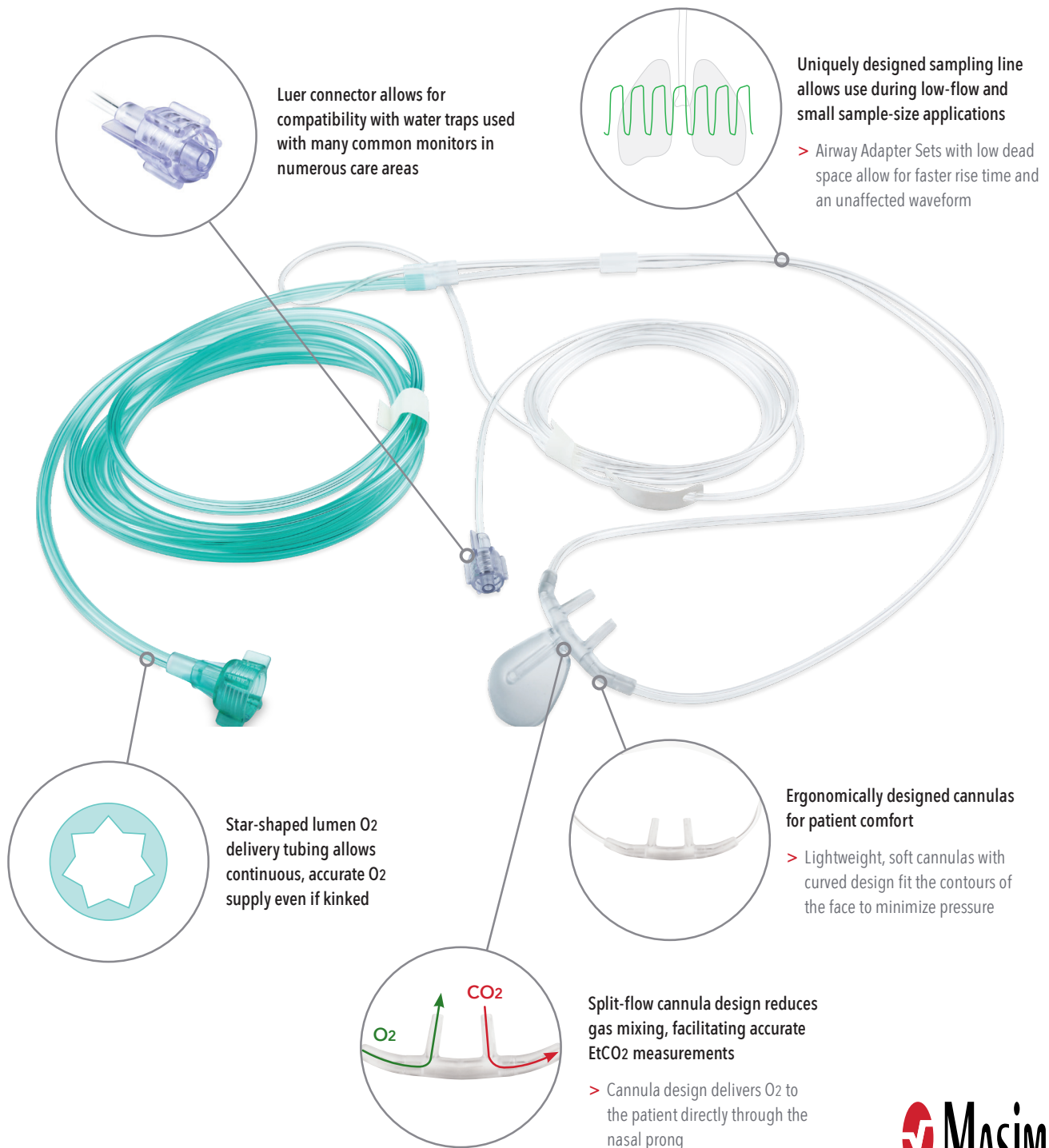
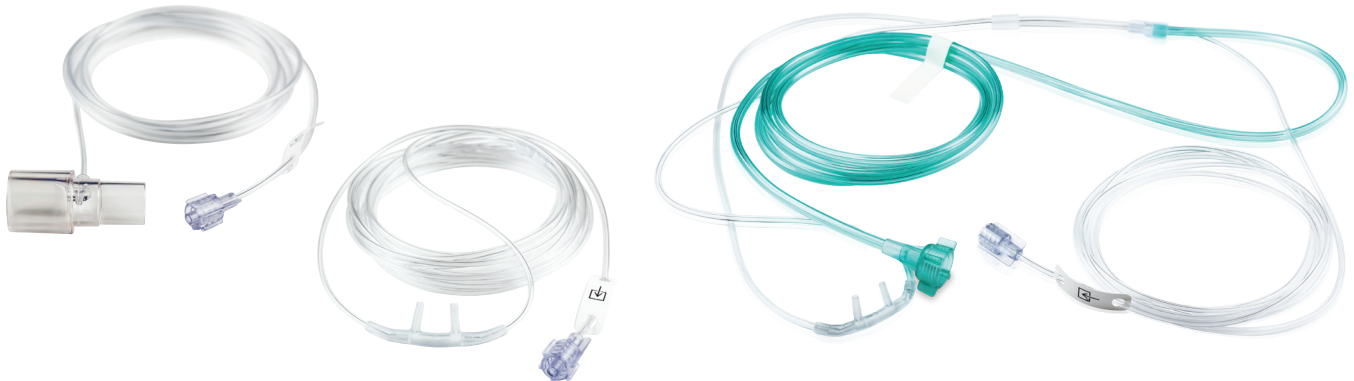


NomoLine[®] with Luer Sampling Lines

Cannulas and Airway Adapter Sets for Effective Capnography and Gas Monitoring



NomoLine with Luer Products



Large, diverse product line allows use across all patient populations

- > For intubated patients, airway adapter sets with low dead space, allowing for fast rise time
- > For non-intubated patients, cannulas designed to facilitate EtCO₂ measurement in a variety of clinical care settings

NomoLine with Luer Specifications

Length Options	2 m and 3 m
Tubing Inner Diameter	1 mm
Supplementary Oxygen Delivery	Up to 5 lpm
Airway Adapter Dead Space	
Adult/Pediatric	≤ 6 ml
Material	Not made with natural rubber latex

Caution: Federal (USA) law restricts this device to sale by or on the order of a physician. See instructions for use for full prescribing information, including indications, contraindications, warnings, and precautions.

Not all part numbers are available for sale in Canada.

Masimo U.S.
Tel: 1 877 4 Masimo
info-america@masimo.com

Masimo International
Tel: +41 32 720 1111
info-international@masimo.com

